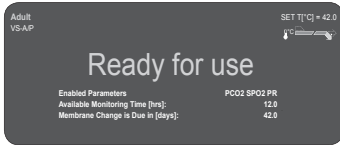


Quick Reference Guide

For the **senTEC** Digital Monitoring System

(Software version SMB SW-V07.00; MPB SW-V05.00)

Routine Use



Prior to usage, verify that the message “Ready for Use” is displayed on the monitor. Check the “Available monitoring time”, the selected “Patient mode” (Adult/Neonatal), and the temperature settings. Consider the table below to choose the desired measurement parameter, application sites and recommended sensor accessory.

Measurement Sites and Sensor Applications

Adult / Pediatric Patients (> 1 month of age)

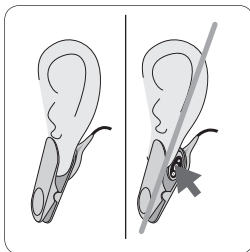
Parameter	Measurement Site	Skin Condition	Application Accessory
PCO ₂ , SpO ₂ /PR	earlobe	intact	Ear Clip
	Low on forehead, cheek	intact	MAR-MI
		sensitive, fragile	MAR-SF
PCO ₂	earlobe	intact	Ear Clip
	Low on forehead, cheek, thorax under clavicle, upper arm, area behind earlobe	intact	MAR-MI
		sensitive, fragile	MAR-SF
		intact	MAR-MI
SpO ₂ /PR	earlobe	intact	Ear Clip
	Low on forehead, cheek	intact	MAR-MI
		sensitive, fragile	MAR-SF
	finger, toes (patient >20kg)	intact	SpO ₂ Soft Sensor

Neonates (up to 1 month of age)

Parameter	Measurement Site	Skin Condition	Application Accessory
PCO ₂	thorax under clavicle, abdomen, back, low on forehead, inner or anterior aspect of the thigh	mature, intact	MAR-MI
		sensitive, fragile	MAR-SF

Note: This table presents the recommended applications for the V-Sign™ Sensor 2 (VS-A/P/N) with the orange sensor cable. If you use the previous sensor version (VS-A/P) with a grey sensor cable SpO₂/PR monitoring is only approved for earlobe placement.

Note: Verify that SpO₂/PR parameters are disabled, if these measurement parameters are not supported for the chosen sensor application.



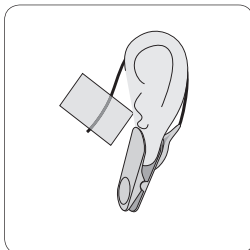
Sensor Application using an Ear Clip

1. Clean the earlobe with a swab wetted with 70% isopropanol and let it dry. Insert the sensor into Ear Clip, remove cover of adhesive tape and place one small drop of contact liquid⁽¹⁾ on surface of sensor. Hold sensor horizontally, so the contact liquid does not roll off the sensor face.

2. Pull earlobe in horizontal position. From the side, move the sensor horizontally in and attach the sensor from below to the back side of the earlobe. Close clip from above, then guide earlobe back in vertical position.

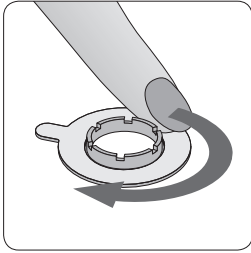
Note: Verify that the whole dark surface of the sensor is covered by the earlobe. Ensure that air gaps are eliminated between the skin and the sensor.

3. Wrap cable around the ear once and tape the cable to the cheek as shown in the picture. Provide a small squeeze with your fingers to the sensor and ear clip as a final security check. Secure sensor cable with Clothing Clip on shirt or bed linen.



⁽¹⁾ Contact liquid: Contact Gel, clean tap water, sterile water, and sterile saline solution.

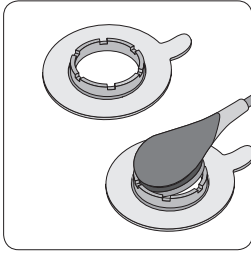
Sensor Application using a Multi-Site Attachment Ring



1. Remove hair if necessary. Clean the skin at the measuring site with swab wetted with 70% isopropanol (for neonates may only use water) and let it dry.

2. Remove cover of adhesive tape of the attachment ring and attach the ring to the measuring site. Press gently on snap ring. Move your finger around the ring circumference to ensure a good adhesion of the entire adhesive to the skin.

3. Apply one small drop of contact liquid⁽¹⁾ or clean tap water to the skin area in the center of the attachment ring.



4. Holding the sensor at the cable strain relief, approach the MAR from the flap side and first insert the nose of the sensor into the ring. Then apply a slight downward pressure on the cable strain relief. Twist the sensor in the ring and press the sensor gently against the skin to spread the contact liquid⁽¹⁾. Ensure that air gaps are eliminated between the skin and the sensor. Tape the cable to the skin and secure it with Clothing Clip on shirt or bed linen. For forehead/cheek placement, wrap the cable once around ear first.

Note: Alternatively you may click the sensor into the Multi-Site Attachment Ring first and then attach the assembly to the skin.

⁽¹⁾Contact liquid: Contact Gel, clean tap water, sterile water, or sterile saline solution.

Patient - Monitoring

Verify that PCO₂ is rising initially (PCO₂ stabilization period) and that the readings for SpO₂ and PR, if enabled, are stable. If needed, reposition the sensor.

After Monitoring

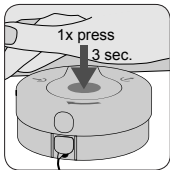
When monitoring is completed, or "Remaining Monitoring Time" has elapsed remove sensor from patient and check the skin. Clean the sensor with a swab wetted with 70% isopropanol and always store it in docking station.

IMPORTANT:

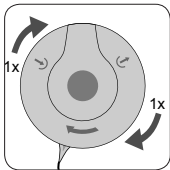
Always clean sensor after use!

Always keep the monitor switched on and the sensor in the Docking Station.

Maintenance Intervals



4x



Membrane: Change the sensor membrane periodically as requested by the monitor. Place Membrane Changer on a solid flat surface. Hold the sensor head with the membrane face upwards and insert the V-Sign™ Sensor into the Membrane Changer. Keep the Membrane Changer horizontal while repeating the following procedure 4 times:

- 1.** Press down slowly, but firmly with the heel of hand, then
- 2.** grab base of tool with one hand, turn top clockwise with other hand to next stop.

At the end, lift the sensor to remove it from the tool and verify that the membrane is securely seated.

Confirm the membrane change on the monitor and place the sensor in the docking station. A calibration will start.

For additional information / instructions refer to the Instruction Manual, the Technical Manual or the respective Directions for Use of the sensor and accessories.